



LET'S BUILD A BETTER FUTURE

 FRONT ENTRY DOORS / **AD** series



Comfort is just a step away

Front entry doors, aren't they one of the most important parts of our home? They protect us from the cold, from the rain or the burglars, to mention just these examples. Doors also keeps us away from street noise. But how do you make the right choice, and buy a door that will meet our expectations and serve us for years?

An issue that requires careful consideration before the purchase is the heat transfer coefficient (U). The lower its value, the more heat will stay with us inside. Aluprof offers panelled doors with the U_D coefficient of $0.44 \text{ W}/(\text{m}^2\text{K})$.

When choosing our door, let's not forget to check out their water resistance. It's the water resistance of the door that will keep the driving rain outside in times of strong winds and heavy rain. Water resistance of the front entry door is rated from 3A to 9A. The higher the class, the better the door protects our home. Aluprof offers panelled doors rated 7A.

Infill panels are included in door leaves based on the MB-70, MB-79N, MB-86 & MB-104 Passive system, and come in a variety of colours and structures. The elements can be milled, decorated with applications or made of insulated glass. Panelled doors can be fabricated very large and high – up to 1.40 m (W) and almost 2.60 m (H). If, therefore, we dream of an impressive front entrance, this will be the perfect choice. But above all, the door should fit to the style of your home. If our interiors are the traditional ones, we should opt for a leaf with glass panels or wooden-like veneer. Lovers of modern interior can choose among RAL colours, think shade of graphite.

Let's take some time and choose a door with which we will create a beautiful entrance that will enchant our guests and will make us feel like we were in a safe haven.

MB-104 Passive

U_D from 0.44 W/m²K

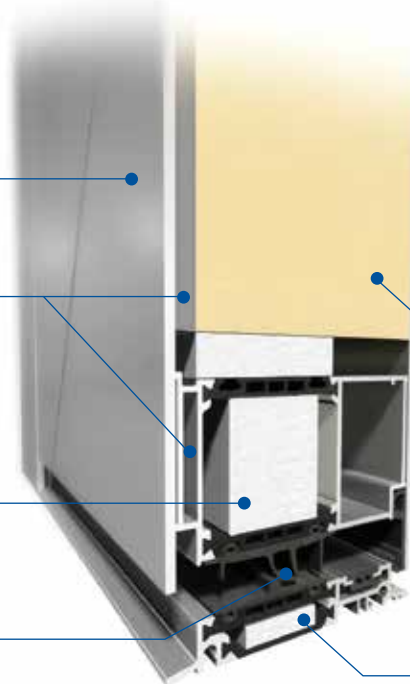
Aluprof's panel door uses thermally insulated aluminium profile system – MB-104 Passive is the most technologically advanced door system offered by Aluprof. The leaf profile can be combined with special infills, aligned with the surface of the frame. The system is dedicated to passive and energy-efficient buildings

Aesthetically pleasing, decorative panels are available in various designs and RAL colours

Expansion profiles and door leaf panels

Design variants: SI, SI+ and AERO

Central gaskets around the leaf and the frame to seal, cover, and increase the thermal insulation of the door



Technical details:

Frame depth	95 mm
Leaf depth	95 mm
Infill panel thickness	44 - 95 mm
Maximum dimensions of the leaf	(H×L) L up to 1400 mm, H up to 2600 mm

Technical parameters:

Air permeability	Class 3, EN 12207
Water tightness	Class E1200 (1200 Pa), EN 12208
Wind load resistance	Class C4/B4, EN 12210
Thermal insulation	U_D from 0.44 W/m ² K
Burglary-resistance	RC2

High density polyurethane foam (PUR) with high thermal performance

95 mm wide threshold the frame and threshold are the same width, providing a desirable flush finish

MB-86

U_D from 0.66 W/m²K

Aluprof's panel doors use thermally insulated aluminium profile system – MB-86 – which, just like the MB-104 Passive system, is dedicated to energy-efficient and passive building. The leaf profile can be combined with special infills, aligned with the surface of the frame.

Technical details:

Frame depth	77 mm
Leaf depth	77 mm
Infill panel thickness	44 - 77 mm
Maximum dimensions of the leaf	(H×L) L up to 1400 mm, H up to 2600 mm

Technical parameters:

Air permeability	Class 3, EN 12207
Water tightness	Class E900 (900 Pa), EN 12208
Wind load resistance	Class C5/B5, EN 12210
Thermal insulation	U_D from 0.66 W/m ² K
Burglary-resistance	RC2

Aesthetically pleasing, decorative panels are available in various designs and RAL colours

Expansion profiles and door leaf panels

They come in four versions: ST, SI, SI+ and AERO for a very good thermal performance



Excellent thermal insulation thanks to the polyurethane foam (PUR)

Rigid and durable aluminium profiles permit the fabrication of large-dimensioned doors

Specially designed weather strips provide high water tightness and low air permeability, bringing both a comfort and a potential for cost savings

MB-79N

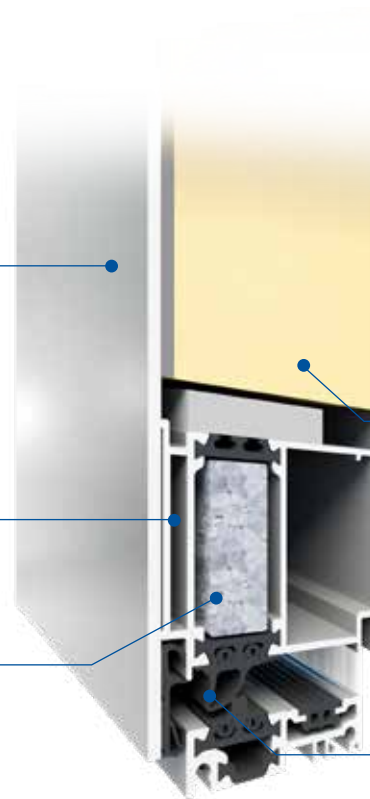
U_D from 0,7 W/m²K

Aluprof's panel door uses popular, thermally insulated aluminium profile system – MB-79N ST, MB-79N SI and MB-79N SI+. The leaf profile can be combined with special infills, aligned with the surface of the frame.

Elegant decorative panels, available in many different patterns and RAL colours and wood effect finishes

Expansion profiles

They come in three versions: MB-79N ST, MB-79N SI and MB-79N SI+, for a very good thermal performance

**Technical details:**

Frame depth	70 mm
Leaf depth	70 mm
Infill panel thickness	44 -70 mm
Maximum dimensions of the leaf	(H×L) L up to 1400 mm, H up to 2600 mm

Technical parameters:

Air permeability	Class 3, EN 12207
Water tightness	Class E900 (900 Pa), EN 12208
Wind load resistance	Class C5/B5, EN 12210
Thermal insulation	U_D from 0.7 W/m ² K
Burglary-resistance	RC2

XPS polyurethane foam ensures an excellent thermal insulation

Specially designed weather strips provide high water tightness and low air permeability, bringing both a comfort and a potential for cost savings

MB-70

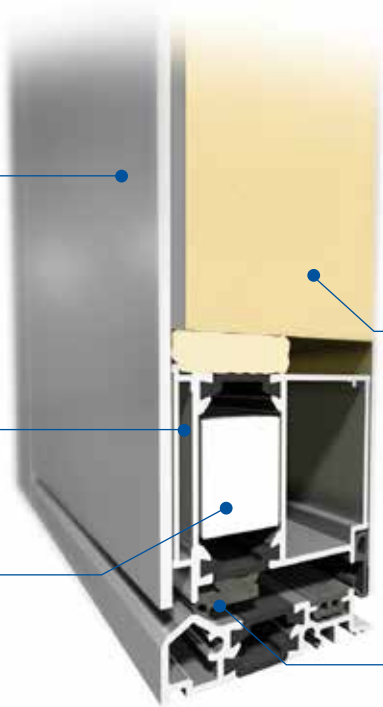
U_D from 0.9 W/m²K

The structure of panel doors is based on the popular thermally broken aluminium sections MB-70 and MB-70HI which complete the range of energy-efficient doors in the Aluprof portfolio. Similarly to other panel door system the leaf profile is designed for coupling with special infill panels that can be installed flush with the door frame plane.

Elegant decorative panels, available in many different patterns and RAL colours and wood effect finishes

Expansion profiles

Two design variants: MB-70 and MB-70HI for a very good thermal performance



Technical details:

Frame depth	70 mm
Leaf depth	70 mm
Infill panel thickness	44 -70 mm
Maximum dimensions of the leaf	(H×L) L up to 1200 mm, H up to 2400 mm

Technical parameters:

Air permeability	Klasa 4, EN 12207
Water tightness	Klasa 7A (300 Pa), EN 12208
Wind load resistance	Klasa C5/B5, EN 12210
Thermal insulation	U_D from 0.9 W/m ² K
Burglary-resistance	RC2

XPS extruded polystyrene with enhanced thermal insulation

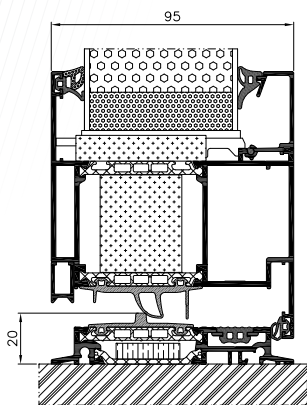
Specially designed weather strips provide high water tightness and low air permeability, bringing both a comfort and a potential for cost savings

BASIC



Insert panels

- Double glazing units, U_g coefficient of U_g 0.5 W/m²K or of 0.7 W/m²K
- 44 to 72 mm thick panel
- Thermal transmittance for MB-70HI doors U_D from 1.3 W/m²K, for MB-79N doors U_D from 1.0 W/m²K, for MB-86 doors U_D from 0.8 W/m²K and for MB-104 doors U_D from 0.63 W/m²K
- Four versions: ST, HI, SI, SI+ and Aero

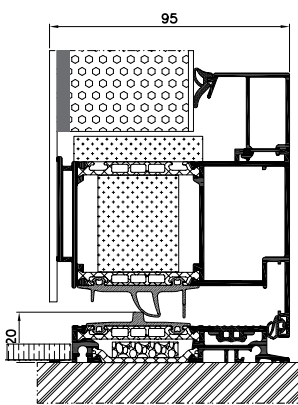


CLASSIC



Aligned on one side

- Triple glazing units, U_g coefficient of U_g 0.5 W/m²K or of 0.7 W/m²K
- 44 to 85 mm thick panel
- Thermal transmittance for MB-70HI doors U_D from 1.1 W/m²K, for MB-79N doors U_D from 0.9 W/m²K, for MB-86 doors U_D from 0.64 W/m²K and for MB-104 doors U_D from 0.48 W/m²K
- Four versions: ST, HI, SI, SI+ and Aero

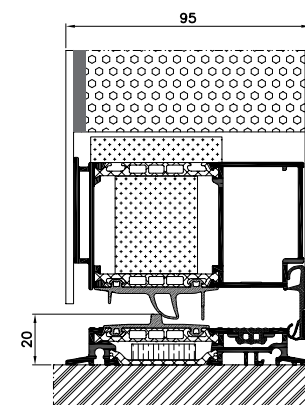


EXCLUSIVE



Aligned on both sides

- Triple glazing units, U_g coefficient of U_g 0.5 W/m²K or of 0.7 W/m²K
- 70 mm thick panel (MB-70 and MB-79N), 77 mm (MB-86) and 95 mm (MB-104 Passive)
- Thermal transmittance for MB-70HI doors U_D from 0.9 W/m²K, for MB-79N doors U_D from 0.7 W/m²K, for MB-86 doors U_D from 0.63 W/m²K and for MB-104 doors U_D from 0.44 W/m²K
- Four versions: ST, HI, SI, SI+ and Aero



All available models can be inserted into the profiles or glued on one or both sides.



AD01

- Pull AS 10 1600
- Glazing (front): VSG 33.1 thermofloat
- Glazing (center): Satinovo
- Glazing (backside) thermofloat with warm edge spacer
- Colour: RAL 7016



AD02

- Pull AS 10 1600
- Glazing (front): VSG 33.1 thermofloat
- Glazing (center): Satinovo
- Glazing (backside) thermofloat with warm edge spacer
- Inox steel placed outside, aligned
- Colour: RAL 7016



AD03

- Pull AS 10 1600
- Glazing (front): VSG 33.1 thermofloat
- Glazing (center): Satinovo
- Glazing (backside) thermofloat with warm edge spacer
- Inox steel placed outside, aligned
- Colour: RAL 7016



AD04

- Pull AS 10 800
- Glazing (front): VSG 33.1 thermofloat
- Glazing (center): Satinovo
- Glazing (backside) thermofloat with warm edge spacer
- Inox steel placed outside, sticked
- Colour: RAL 7016



AD05

- Pull AS 20 800
- Glazing (front): VSG 33.1 thermofloat
- Glazing (center): Satinovo
- Glazing (backside) thermofloat with warm edge spacer
- Inox steel placed outside, sticked
- Colour: RAL 7016



AD06

- Pull AS 10 1400
- Glazing (front): VSG 33.1 thermofloat
- Glazing (center): Satinovo
- Glazing (backside) thermofloat with warm edge spacer
- Inox steel placed outside, aligned
- Colour: RAL 7016



AD07

- Pull AS 10 1600
- External millings
- Colour: RAL 7016



AD08

- Pull AD 134 1200
- Glazing (front): VSG 33.1 thermofloat
- Glazing (center): sandblasted glass with transparent strips
- Glazing (backside) thermofloat with warm edge spacer
- Inox steel placed outside, aligned
- Colour: RAL 7016



AD09

- Pull AS 10 800
- Glazing (front): VSG 33.1 thermofloat
- Glazing (center): Satinovo
- Glazing (backside) thermofloat with warm edge spacer
- External millings
- Colour: RAL 7016



AD10

- Pull AS 10 1200
- External millings plus inox steel placed outside
- Colour: RAL 7016



AD11

- Pull AS 20 1200
- Glazing (front): VSG 33.1 thermofloat
- Glazing (center): Satinovo
- Glazing (backside) thermofloat with warm edge spacer
- External millings
- Colour: RAL 7016



AD12

- Pull AS 10 1400
- Glazing (front): VSG 33.1 thermofloat
- Glazing (center): Satinovo
- Glazing (backside) thermofloat with warm edge spacer
- External millings
- Colour: RAL 7016



AD13

- Pull AS 10 1200
- Glazing (front): VSG 33.1 thermofloat
- Glazing (center): Satinovo
- Glazing (backside) thermofloat with warm edge spacer
- Wood-like or inox steel placed outside, aligned
- Colour: RAL 9007



AD14

- Pull AS 10 1200
- Inox steel placed outside, aligned
- Colour: RAL 7016



AD15

- Pull AZ76
- Glazing (front): VSG 33.1 thermofloat
- Glazing (center): Satinovo
- Glazing (backside) thermofloat with warm edge spacer
- Inox steel placed outside, aligned
- Colour: RAL 7016/RAL 3004



AD16

- Pull AW72
- External millings
- Colour: RAL 7001



AD17

- Pull AS 10 1600
- Colour: RAL 3004



AD18

- Pull AW10
- Inox steel placed outside, aligned
- Colour: RAL 7016



AD19

- Pull AS 10 800
- Glazing (front): VSG 33.1 thermofloat
- Glazing (center): sandblasted glass with transparent strips
- Glazing (backside) thermofloat with warm edge spacer
- Colour: RAL 7001



AD20

- Pull AS 10 1400
- Glazing (front): VSG 33.1 thermofloat
- Glazing (center): Satinovo
- Glazing (backside) thermofloat with warm edge spacer
- Inox steel placed outside, aligned
- Colour: RAL 7016



AD21

- Pull AS 10 1200
- Glazing (front): VSG 33.1 thermofloat
- Glazing (center): Satinovo
- Glazing (backside) thermofloat with warm edge spacer
- Aligned, wood-like
- Colour: RAL 9010



AD22

- Pull AS 10 1000
- Glazing (front): VSG 33.1 thermofloat
- Glazing (center): Satinovo
- Glazing (backside) thermofloat with warm edge spacer
- Inox steel placed outside, aligned
- Colour: RAL 7016



AD23

- Pull AS 10 1200
- Glazing (front): VSG 33.1 thermofloat
- Glazing (center): Satinovo
- Glazing (backside) thermofloat with warm edge spacer
- External millings
- Colour: RAL 7016



AD24

- Pull AS 10 1400
- Inox steel placed outside, aligned
- Colour: RAL 7016/Wood-like
- Wood-like colour: ADEC O205 Walnut Vein



AD25

- Pull AS 10 1400
- Glazing (front): VSG 33.1 thermofloat
- Glazing (center): Satinovo
- Glazing (backside) thermofloat with warm edge spacer
- External millings plus stainless steel, placed outside, aligned
- Colour: RAL 9016



AD26

- Pull AS 10 1600
- Glazing (front): VSG 33.1 thermofloat
- Glazing (center): Satinovo
- Glazing (backside) thermofloat with warm edge spacer
- Inox steel placed outside, aligned
- Colour: RAL 3004



AD27

- Pull AS 10 1800
- Glazing (front): VSG 33.1 thermofloat
- Glazing (center): Satinovo
- Glazing (backside) thermofloat with warm edge spacer
- Inox steel placed outside, aligned
- Colour: RAL 7016



AD28

- Pull AS 10 1400
- Glazing (front): VSG 33.1 thermofloat
- Glazing (center): Satinovo
- Glazing (backside) thermofloat with warm edge spacer
- Inox steel placed outside, aligned
- Colour: RAL 9016



AD29

- Pull AQ10 1020 1600 mm with RAL 9005 powder coating
- External millings
- Colour: RAL 7016
- Wood-like colour: ADEC C212 Gean



AD30

- Pull AW25
- External millings
- Colour: RAL 3003



AD31

- Pull AW104
- External millings
- Colour: RAL 7001



AD32

- Flush-mounted pull: AW23, L-1400 mm, inox steel
- Colour: RAL 9007



AD33

- Flush-mounted pull: L - 1000 mm integrated with the panel, with matching powder coating
- Decoration: flush-mounted stainless steel
- Colour: RAL 9016



AD34

- Flush-mounted pull: L - 1000 mm integrated with the panel, with matching powder coating
- Decoration: wood-effect powder coating
- Colour: RAL 9016
- Colour: wood effect ADEC D207 Winchester



AD35

- Flush-mounted pull: L - 1600 mm integrated with the panel, with matching powder coating
- Front glazing: Thermofloat VSG 33.1
- Centre glazing: Satinovo
- Back glazing: Thermofloat, with a warm edge spacer bar
- Colour: RAL 9016



AD36

- Flush-mounted pull: L - 1600 mm integrated with the panel, with matching powder coating
- Decoration: flush-mounted stainless steel
- Colour: RAL 7016

Models with a flush-mounted, integrated pull available for profiles from 65 to 95 mm thick.



AD37

- Flush-mounted pull: L - 1600 mm integrated with the panel, with matching powder coating
- Decoration: milled on the exterior
- Colour: RAL 9007



AD38

- Flush-mounted pull: L - 1600 mm integrated with the panel, with matching powder coating
- Colour: RAL 9007

Models with a flush-mounted, integrated pull available for profiles from 65 to 95 mm thick.





AD39

- Flush-mounted pull: L - 1600 mm integrated with the panel, with RAL 9005 powder coating
- Colour: concrete effect



AD40

- Pull: AQ 1020 1600
- Colour: concrete effect



AD41

- Pull: AQ 1020 1600 with RAL 9005 powder coating
- Front glazing: Thermofloat VSG 33.1
- Centre glazing: Satinovo
- Back glazing: Thermofloat, with a warm edge spacer bar
- Colour: concrete effect



AD42

- Pull: AQ 1020 1600
- Decoration: 3D stainless steel on the outside
- Colour: concrete effect

Models with a flush-mounted, integrated pull available for profiles from 65 to 95 mm thick.



AD43

- Pull: AQ 1020 1600 with RAL 9005 powder coating
- Colour: Makalu; natural stone



AD44

- Flush-mounted pull: L: 1600 mm integrated with the panel, with RAL 9005 powder coating
- Colour: Makalu; natural stone

The images and the colour of the stone are provided as a visual reference.
The type of stone selected, its structure and its thickness may vary slightly on account of its natural characteristics.

Models with a flush-mounted, integrated pull available for profiles from 65 to 95 mm thick.





AD45

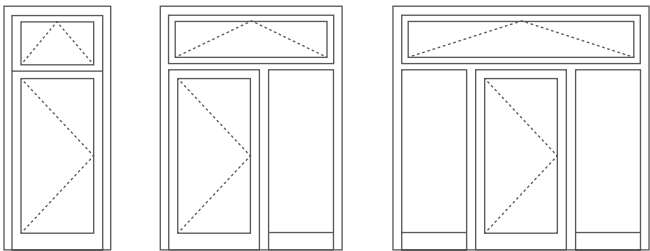
- Flush-mounted pull: L: 1600 mm integrated with the panel, with RAL 9005 powder coating
- Colour: Everest; natural stone

AD46

- Pull: AQ 1020 1600 with RAL 9005 powder coating
- Decoration: 3D stainless steel on the outside
- Colour: RAL 7016 / Annapurna; natural stone

The images and the colour of the stone are provided as a visual reference.
The type of stone selected, its structure and its thickness may vary slightly on account of its natural characteristics.

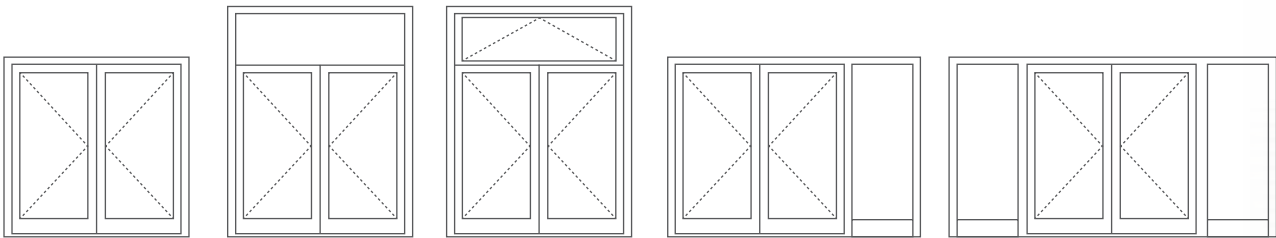
Models with a flush-mounted, integrated pull available for profiles from 65 to 95 mm thick.



1

2

3



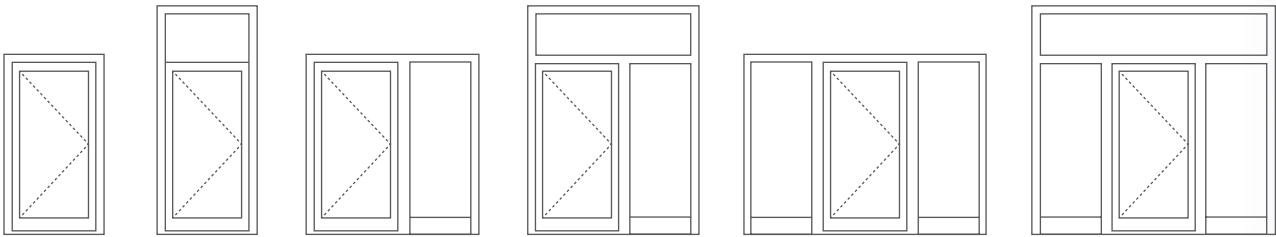
4

5

6

7

8



9

10

11

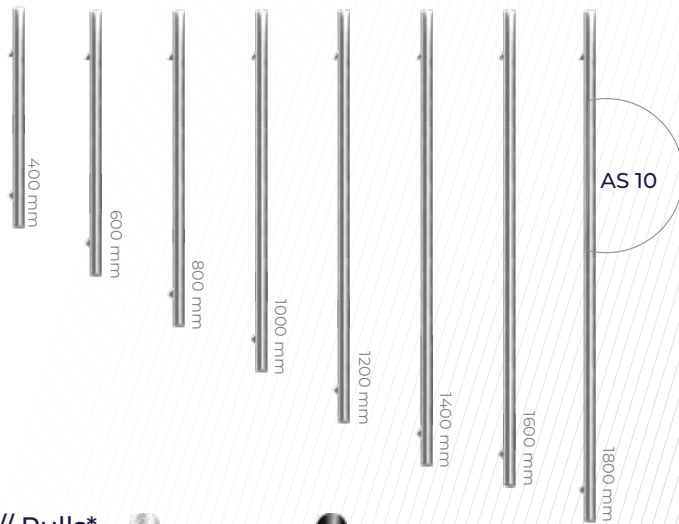
12

13

14



// Pulls*  stainless steel  black

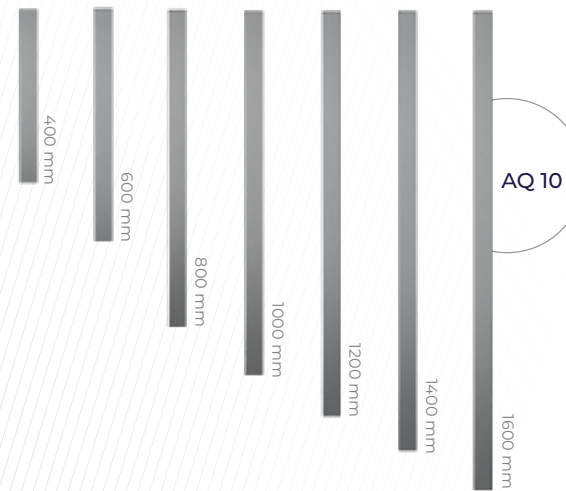


AS 10

available
dia. 30 mm
straight bracket

- AS 10 400
- AS 10 600
- AS 10 800
- AS 10 1000
- AS 10 1200
- AS 10 1400
- AS 10 1600
- AS 10 1800

// Pulls*  stainless steel  black



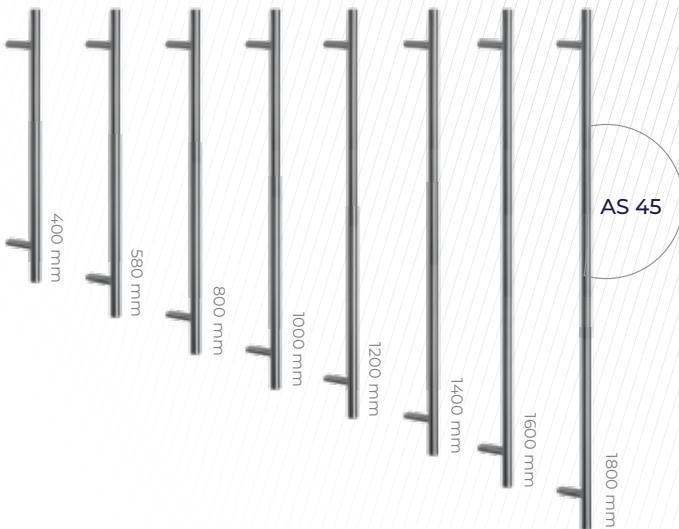
AQ 10

available
40 x 20, 40 x 40 mm

- AQ 1020 400
- AQ 1020 600
- AQ 1020 800
- AQ 1020 1000
- AQ 1020 1200
- AQ 1020 1400
- AQ 1020 1600

- AQ 1040 400
- AQ 1040 600
- AQ 1040 800
- AQ 1040 1000
- AQ 1040 1200
- AQ 1040 1400
- AQ 1040 1600

// Pulls*  stainless steel  black

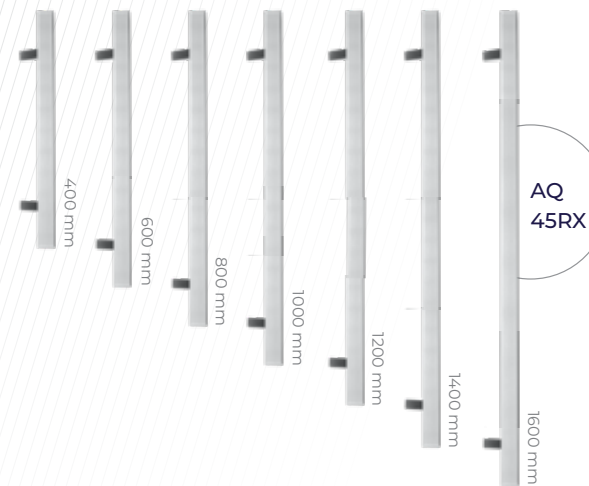


AS 45

available
dia. 30 mm
angle brace 45°

- AS 45 400
- AS 45 580
- AS 45 800
- AS 45 1000
- AS 45 1200
- AS 45 1400
- AS 45 1600
- AS 45 1800

// Pulls*  stainless steel  black



AQ 45RX

available
40 x 20, 40 x 40 mm

- AQ 4520RX 400
- AQ 4520RX 600
- AQ 4520RX 800
- AQ 4520RX 1000
- AQ 4520RX 1200
- AQ 4520RX 1400
- AQ 4520RX 1600

- AQ 4540RX 400
- AQ 4540RX 600
- AQ 4540RX 800
- AQ 4540RX 1000
- AQ 4540RX 1200
- AQ 4540RX 1400
- AQ 4540RX 1600

* Mounting kit included - see the price list for details.

and large mounting kits (polyurethane adhesive, activator, primer, sponge to apply the primer + sponge sanding block) and small mounting kits (polyurethane adhesive, sponge to apply the primer + sponge sanding block).

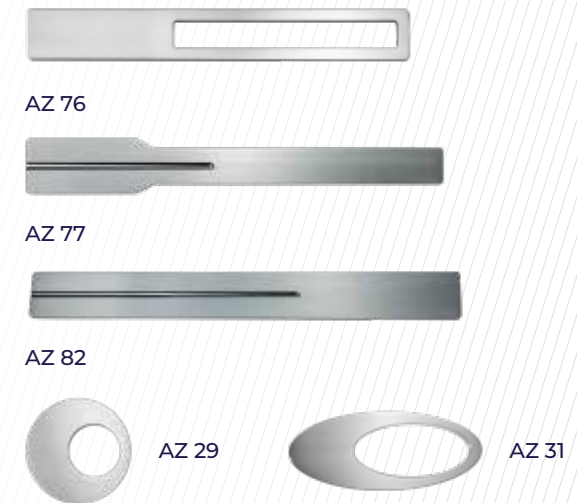
// Pulls*  stainless steel



// Flush fitted pulls  stainless steel  black



// Decorative pulls

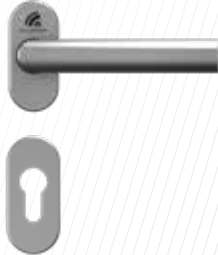


// Lever pull

1924216X
stainless steel,
natural anode
and inox, white,
anthracite, black



1924218X
stainless steel,
natural anode and
inox, white, anthracite,
black



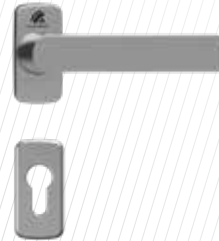
1924230X
stainless steel

8001289X
natural anode,
RAL



1924113X
stainless steel

1924111X
RAL

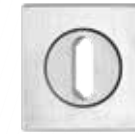


1924113X
stainless steel

// Rosettes



AR 61421



AR 74421



AR 78421



ARS 10



ARS 20

// Scratch protection



KS100



KS200



KS300



KS400



KS400 BIOKEY

// Kickplates



EK100 kick plate, flush-mounted
or applied with adhesive

// Pull with electronics



Fingerprint scanner

available with the AQ 10 and AQ 45



PWZ integrated with the panel

colour
of pull:
as per
the RAL
chart



PWZ* pull with backlighting



available
with the
AS 10
pull

Micro switch set into the pull*



available
with the
AQ 10
pull



available
with the
AS 10
AS 45
pull

Touch sensor set into the pull*



available
with the
AQ 10
PQ 45
AQ
AW 10
AW 21
AW 22
AW 72
pull

*Available backlight colours:  cool white (standard)  warm white

// Ornaments



Master-Point



Chinchilla



Satinata



Master-Ligne



Master-Carre

Aluprof offers a wide range of glass with motif, glass made of transparent or ornamental glass in its most popular models.

All door models come in variants with sidelight and toplight.

Variant 1: Sandblasted glass (motif)

Variant 2: Transparent glass

Variant 3: Ornamental glass

Variant 4: Safety glass

Sidelights and fixed lights include triple glazing units with warm glass spacers. Sidelights (fixed glazing) can be placed either on one or on both sides of the door assembly.

Maximum sidelight width: 1400 mm

Extra ornaments (optional):

“Master-Point”

“Chinchilla”

“Satinata”

“Master-Ligne”

“Master-Carre”

“Mirrastar” (mirror effect)

“Antisol” (semi-transparent mirror effect)

// Wood effect / Concrete effect



Golden Oak ADEC D101 Rustic Oak ADEC D210 Swamp Oak ADEC D502 Vintage Oak ADEC D825 Ebony ADEC M102 Palisander ADEC M332 Walnut ADEC O102 Walnut Vein ADEC O205 Dark walnut ADEC O306 Mahogany ADEC M103



Mahogany Sapeli ADEC M204 Pine ADEC S106 Pine ADEC S110 Fir ADEC J107 Fir ADEC S208 Beech ADEC B108 Cherry ADEC W109 Wenge ADEC W205 Winchester ADEC D207 Gean ADEC C110

// RAL & structural colours*



Gean ADEC C212 Dark Cherry ADEC C106 Chestnut ADEC K101 Concrete ADEC E137

* All RAL colours and structural colours as per the offer
The colours may vary slightly from the finished product.



Scan the QR code
and download the PDF
onto your mobile device

ALUPROF

ALUMINIUM SYSTEMS

ALUPROF SA

ul. Warszawska 153, 43-300 Bielsko-Biała, Poland
tel. +48 33 81 95 300, fax +48 33 82 20 512
e-mail: aluprof@aluprof.eu, www.aluprof.eu



LET'S BUILD A BETTER FUTURE

 FRONT ENTRY DOORS / **AP** series



ECO-HOME with Aluprof

Front entry doors; aren't they one of the most important parts of our home? They protect us from the cold, the rain, and the burglars, to mention just a few examples. Doors also keeps us away from street noise. But how do you make the right choice, and buy a door that will meet our expectations and serve us for years?

An issue that requires careful consideration before the purchase is the heat transfer coefficient (U). The lower its value, the more heat will stay with us inside. Aluprof offers panelled doors with the U_D coefficient of 0.50 W/(m²K).

When choosing our door, let's not forget to check out their water resistance. It's the water resistance of the door that will keep the driving rain outside in times of strong winds and heavy rain. The higher the class, the better the door protects our home. Aluprof offers panelled doors rated E1200 (1200 Pa).

Infill panels are included in door leaves based on the MB-70, MB-79N, MB-86 and MB-104 Passive system, and come in a variety of colours and structures. The elements can be milled, decorated with applications or made of insulated glass. Panelled doors can be fabricated very large and high – up to 1.40 m (W) and almost 2.60 m (H). If, therefore, we dream of an impressive front entrance, this will be the perfect choice. But above all, the door should fit to the style of your home. If our interiors are the traditional ones, we should opt for a leaf with glass panels or wooden-like veneer. Lovers of modern interior can choose among RAL colours, think shade of graphite.

Let's take some time and choose a door with which we will create a beautiful entrance that will enchant our guests and will make us feel like we were in a safe haven.

MB-104 Passive

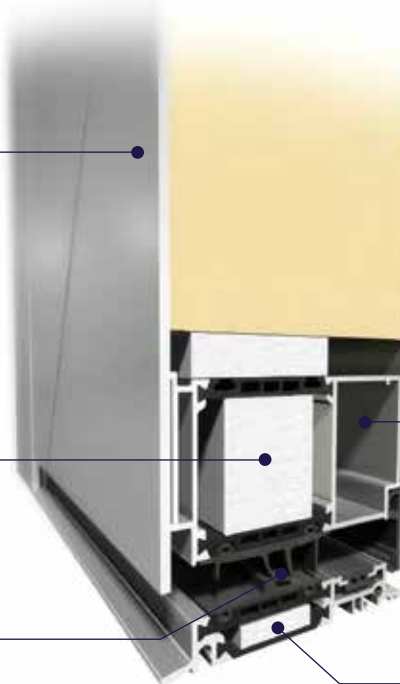
U_D from 0.50 W/m^2K

Aluprof's panel door uses thermally insulated aluminium profile system – MB-104 Passive is the most technologically advanced door system offered by Aluprof. The leaf profile can be combined with special infills, aligned with the surface of the frame. The system is dedicated to passive and energy-efficient buildings.

Elegant decorative panels, available in many different patterns and RAL colours and wood effect finishes

Design variants: SI, SI+ and AERO

Central gaskets around the leaf and the frame to seal, cover, and increase the thermal insulation of the door



Technical details:

Frame depth	95 mm
Leaf depth	95 mm
Infill panel thickness	up to 95 mm
Maximum dimensions of the leaf	(H×L) L up to 1400 mm, H up to 2600 mm

Technical parameters:

Air permeability	Class 4, EN 12207
Water tightness	Class E1200 (1200 Pa), EN 12208
Wind load resistance	Class C4/B4, EN 12210
Thermal insulation	U_D from 0.50 W/m^2K
Burglary-resistance	RC2

Expansion joint profiles

95 mm-wide warm threshold - the same width as the threshold and frame

MB-86

U_D from 0.66 W/m²K

Aluprof's panel doors use thermally insulated aluminium profile system – MB-86 – which, just like the MB-104 Passive system, is dedicated to energy-efficient and passive building. The leaf profile can be combined with special infills, aligned with the surface of the frame.

Aesthetically pleasing, decorative panels are available in various designs and colours

They come in four versions: ST, SI, SI + and AERO for a very good thermal performance



Technical details:

Frame depth	77 mm
Leaf depth	77 mm
Infill panel thickness	44 and 77 mm
Maximum dimensions of the leaf	(H×L) L up to 1400 mm, H up to 2600 mm

Technical parameters:

Air permeability	Class 4, EN 12207
Water tightness	Class E900 (900 Pa), EN 12208
Wind load resistance	Class C5/B5, EN 12210
Thermal insulation	U_D from 0.66 W/m ² K
Burglary-resistance	RC2

Rigid and durable aluminium profiles allow to fabricate of large-dimensioned doors

Weather strips provide high water tightness and air permeability, bringing comfort and money savings

MB-79N

 U_D from 0.8 W/m²K

Aluprof's panel door uses popular, thermally insulated aluminium profile system – MB-79N ST, MB-79N SI and MB-79N SI+. The leaf profile can be combined with special infills, aligned with the surface of the frame.

Elegant decorative panels, available in many different patterns and RAL colours and wood effect finishes

Expansion profiles

They come in three versions: MB-79N ST, MB-79N SI and MB-79N SI+, for a very good thermal performance

**Technical details:**

Frame depth	70 mm
Leaf depth	70 mm
Infill panel thickness	44 and 70 mm
Maximum dimensions of the leaf	(H×L) L up to 1400 mm, H up to 2600 mm

Technical parameters:

Air permeability	Class 3, EN 12207
Water tightness	Class E900 (900 Pa), EN 12208
Wind load resistance	Class C5/B5, EN 12210
Thermal insulation	U_D from 0.8 W/m ² K
Burglary-resistance	RC2

Specially designed weather strips provide high water tightness and low air permeability, bringing both a comfort and a potential for cost savings

MB-70

U_D from 0.9 W/m²K

The structure of panel doors is based on the popular thermally-broken aluminium sections MB-70 oraz MB-70HI which complete the range of energy-efficient doors in the Aluprof portfolio. Similarly to other panel door system the leaf profile is designed for coupling with special infill panels that can be installed flush with the door frame plane.

Elegant decorative panels, available in many different patterns and RAL colours and wood effect finishes

Expansion profiles and door leaf panels

Two variants of structure: MB-70 oraz MB-70HI, which enable obtaining very good thermal performance



Technical details:

Frame depth	70 mm
Leaf depth	70 mm
Infill panel thickness	44 and 70 mm
Maximum dimensions of the leaf	(H×L) L up to 1200 mm, H up to 2400 mm

Technical parameters:

Air permeability	Class 4, EN 12207
Water tightness	Class 7A (300 Pa), EN 12208
Wind load resistance	Class C5/B5, EN 12210
Thermal insulation	U_D from 0.9 W/m ² K
Burglary-resistance	RC2

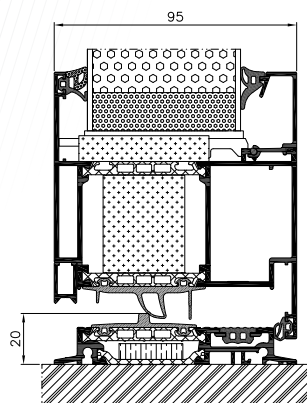
The selected seals ensure high water- and air tightness and air, improving the comfort of use and reducing the cost.

BASIC



Insert panels

- Triple glazing units U_g 0.5 W/m²K or U_g 0.7 W/m²K
- Panel thickness from 44 to 72 mm
- U-value
for MB-70HI door U_D from 1.3 W/m²K,
for MB-79N door U_D from 1.0 W/m²K,
for MB-86 door U_D from 0.8 W/m²K,
and for MB-104 Passive door U_D from 0.63 W/m²K
- Four construction variants: ST, HI, SI, SI+ & Aero

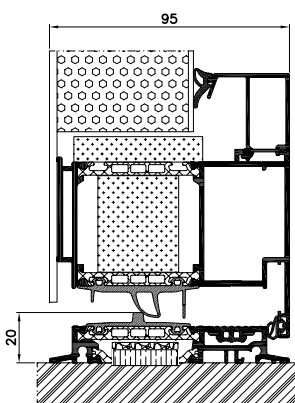


CLASSIC



Aligned on one side

- Triple glazing units U_g 0.5 W/m²K or U_g 0.7 W/m²K
- Panel thicknesses from 44 to 85 mm
- U-value
for MB-70HI door U_D from 1.1 W/m²K,
for MB-79N door U_D from 1.0 W/m²K,
for MB-86 door U_D from 0.64 W/m²K
and for MB-104 Passive door U_D from 0.48 W/m²K
- Four construction variants: ST, HI, SI, SI+ & Aero

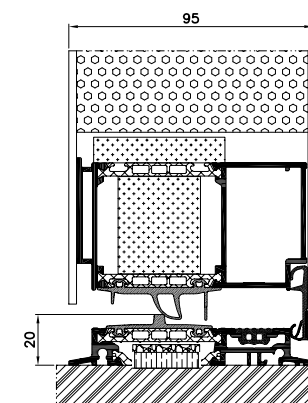


EXCLUSIVE



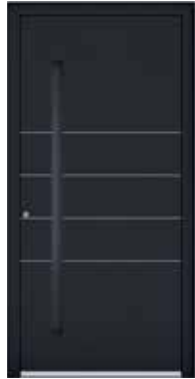
Aligned on both sides

- Triple glazing units U_g 0.5 W/m²K
- 70 mm thick panel (MB-70 and MB-79N),
77 mm (MB-86) and 95 mm (MB-104 Passive)
- U-value
for MB-70HI door U_D from 0.9 W/m²K,
for MB-79N door U_D from 0.8 W/m²K,
for MB-86 door U_D from 0.66 W/m²K
and for MB-104 Passive door U_D from 0.50 W/m²K
- Four construction variants: ST, HI, SI, SI+ & Aero



All available models can be inserted into the profiles or glued on one or both sides.

PANELLED DOOR AP SERIES



AP21
page 10



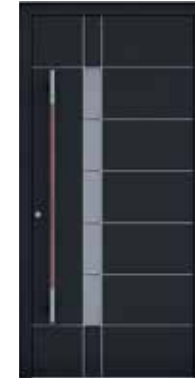
AP22
page 10



AP23
page 11



AP24
page 11



AP25
page 12



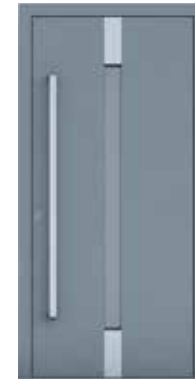
AP26
page 12



AP27
page 13



AP28
page 13



AP11
page 13



AP29
page 14



AP30
page 14



AP19
page 14



AP01
page 15



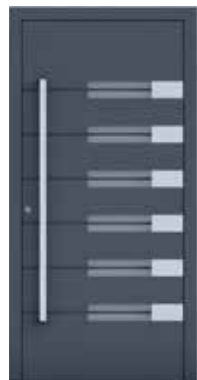
AP02
page 15



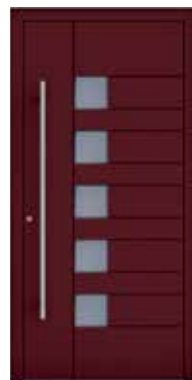
AP31
page 16



AP16
page 16



AP18
page 16



AP07
page 17



AP03
page 17



AP08
page 17



AP13
page 18



AP09
page 18



AP12
page 19



AP15
page 19



AP17
page 19



AP05
page 20



AP04
page 20



AP10
page 20



AP20
page 21



AP21

with a sidelite

- APZ 1600 flush pull handle* Flush inlay
- Alunox 5 mm; on the outside face
- Surface finish: RAL 9005



AP22

- APZ 1600 flush pull handle*
- Glass pane:
 - outer: VSG 33.1
 - middle: Satinato
 - inner: insulating glass with low-E coating
- Surface finish: RAL 7021



AP23

- APZ 1600 flush pull handle*
- 5 mm carves; on the outside face
- AP 3021 kickplate
- Surface finish: DB 703



AP24

with a sidelite

- APZ 1600 flush pull handle*
- AP 3021 kickplate
- AP 3500 anti-scratch protection
- Surface finish RAL 9016

* Models with APZ flush pull handle are available for panel thickness range of 65-95mm



AP25

with a sidelite

- AP 200.1400 door pull handle made of high-grade steel/Jatobe wood
- 5 mm flush Alunox inlay; on the outside face
- Glass pane:
 - outer: VSG 33.1
 - middle: sandblasted glass, chosen motif
 - inner: insulating glass with low-E coating
- Surface finish: RAL 9005



AP26

- AP 40.1600 door pull handle made of high-grade steel
- 5 mm flush Alunox inlay; on the outside face
- Glass pane:
 - outer: VSG 33.1
 - middle: Satinato
 - inner: insulating glass with low-E coating
- AP 3400 anti-scratch protection
- Surface finish: RAL 3004

The actual product colours may vary from the colours shown



AP27

- AP 60.1600 door pull handle made of high-grade steel
- 5 mm carves; on the outside face
- Glass pane:
 - outer: VSG 33.1
 - middle: Satinato
 - inner: insulating glass with low-E coating
- Surface finish: RAL 7016



AP28

- AP 60.1600 door pull handle made of high-grade steel
- 5 mm Alunox inlay; on the outside face
- Glass pane:
 - outer: VSG 33.1
 - middle: Satinato
 - inner: insulating glass with low-E coating
- Surface finish: RAL 9016



AP11

- AP 80.1625 door pull handle made of high-grade steel
- 5 mm Alunox inlay; on the outside face
- Glass pane:
 - outer: VSG 33.1
 - middle: sandblasted with transparent frame
 - inner: insulating glass with low-E coating
- Surface finish: RAL 9007



AP29

- AP 46.825 door pull handle made of high-grade steel, finished in black
- U-type carves; on the outside face
- Surface finish: Winchester - ADEC D207



AP30

- AP 130.1030 door pull handle made of high-grade steel
- 5 mm flush Alunox inlay; on the outside face
- Surface finish: RAL 7016



AP19

- AP 60.800 door pull handle made of high-grade steel
- Glass pane:
 - outer: VSG 33.1
 - middle: sandblasted with transparent strips
 - inner: insulating glass with low-E coating
- Surface finish: RAL 9016

The actual product colours may vary from the colours shown



AP01

- AP 40.1600 door pull handle made of high-grade steel
- Flush Alunox inlay; on the outside face
- Glass pane:
 - outer: VSG 33.1
 - middle: sandblasted with transparent strips
 - inner: insulating glass with low-E coating
- AP 3021 kickplate
- AP 3400 anti-scratch protection
- Surface finish: RAL 9005



AP02

with a sidelite

- AP 60.1600 door pull handle made of high-grade steel
- Flush Alunox inlay; on the outside face
- Glass pane:
 - outer: VSG 33.1
 - middle: sandblasted with transparent strips
 - inner: insulating glass with low-E coating
- AP 3400 anti-scratch protection
- Surface finish: RAL 7016



AP31

- AP 46.1625 door pull handle made of high-grade steel
- Carves; on the outside face
- Glass pane:
 - outer: VSG 33.1
 - middle: sandblasted with transparent strips
 - inner: insulating glass with low-E coating
- Surface finish: RAL 7001



AP16

- AP 60.1600 door pull handle made of high-grade steel
- Carves; on the outside face
- Glass pane:
 - outer: VSG 33.1
 - middle: sandblasted with transparent strips
 - inner: insulating glass with low-E coating
- Surface finish: RAL 9016



AP18

- AP 80.1625 door pull handle made of high-grade steel
- Carves; on the outside face
- Flush Alunox inlay; on the outside face
- Glass pane:
 - outer: VSG 33.1
 - middle: sandblasted with transparent strips
 - inner: insulating glass with low-E coating
- AP 3021 kickplate
- Surface finish: RAL 7015

The actual product colours may vary from the colours shown



AP07

- AP 40.1600 door pull handle made of high-grade steel
- Carves; on the outside face
- Glass pane:
 - outer: VSG 33.1
 - middle: sandblasted with transparent frame
 - inner: insulating glass with low-E coating
- Surface finish: RAL 3004



AP03

- AP 60.1600 door pull handle made of high-grade steel
- Flush Alunox inlay; on the outside face
- Glass pane:
 - outer: VSG 33.1
 - middle: Satinato
 - inner: insulating glass with low-E coating
- AP 3021 kickplate
- Surface finish: RAL 7016



AP08

- AP 80.825 door pull handle made of high-grade steel
- Glass pane:
 - outer: VSG 33.1
 - middle: sandblasted with transparent frame
 - inner: insulating glass with low-E coating
- AP 3021 kickplate
- Surface finish: RAL 9016



AP13

- AP 200.1600 door pull handle made of high-grade steel/Jatobe wood
- Flush Alunox inlay; on the outside face
- Glass pane:
 - outer: VSG 33.1
 - middle: Satinato
 - inner: insulating glass with low-E coating
- Surface finish: RAL 7016



AP09

with a sidelite

- AP 60.1400 door pull handle made of high-grade steel
- Flush Alunox inlay; on the outside face
- Glass pane:
 - outer: VSG 33.1
 - middle: sandblasted glass with transparent frame
 - inner: insulating glass with low-E coating
- Surface finish: RAL 7016/ sweet cherry - ADEC C212



AP12

- AP 50.1200 door pull handle made of high-grade steel
- Glass pane:
 - outer: VSG 33.1
 - middle: sandblasted glass with transparent frame
 - inner: insulating glass with low-E coating
- Surface finish: RAL 9007/RAL 3004



AP15

- AP 50.1200 door pull handle made of high-grade steel
- Flush Alunox inlay; on the outside face
- Glass pane:
 - outer: VSG 33.1
 - middle: Satinato
 - inner: insulating glass with low-E coating
- Surface finish: walnut - ADEC 0102



AP17

- AP 50.1200 door pull handle made of high-grade steel
- Carves; on the outside face
- Glass pane:
 - outer: VSG 33.1
 - middle: sandblasted with transparent strips
 - inner: insulating glass with low-E coating
- AP 3300 anti-scratch protection
- Surface finish: DB 703



AP05

- AP 40.1600 door pull handle made of high-grade steel
- Carves; on the outside face
- AP 3021 kickplate
- Surface finish: RAL 9005



AP04

- AP 60.1600 door pull handle made of high-grade steel
- Flush Alunox inlay; on the outside face
- AP 3021 kickplate
- Surface finish: Winchester - ADEC D207



AP10

- AP 60.1800 door pull handle made of high-grade steel
- AP 3400 anti-scratch protection
- AP 3020 kickplate
- Surface finish: RAL 9006



AP20

- AP 60.1600 door pull handle made of high-grade steel
- Glass pane:
 - outer: VSG 33.1
 - middle: sandblasted chosen motif
 - inner: insulating glass with low-E coating
- AP 3400 anti-scratch protection
- Decorative elements: ornamental frame on the outside
- Surface finish: Vien wallnut - ADEC O102

The actual product colours may vary from the colours shown



Pull handle

AP 40

pull handle, dia. 30 mm
(right-angle holders),
stainless steel,
matte, polished

- AP 40.600 30x600 mm
- AP 40.800 30x800 mm
- AP 40.1000 30x1000 mm
- AP 40.1200 30x1200 mm
- AP 40.1400 30x1400 mm
- AP 40.1600 30x1600 mm
- AP 40.1800 30x1800 mm

AP 60

pull handle, 40 x 10 mm
(right-angle holders),
stainless steel,
matte, polished

- AP 60.600 40x10x600 mm
- AP 60.800 40x10x800 mm
- AP 60.1000 40x10x1000 mm
- AP 60.1200 40x10x1200 mm
- AP 60.1400 40x10x1400 mm
- AP 60.1600 40x10x1600 mm
- AP 60.1800 40x10x1800 mm

AP 100

pull handle, 30 x 30 mm
(right-angle holders),
stainless steel,
matte, polished

- AP 100.600 600 mm
- AP 100.800 800 mm
- AP 100.1000 1000 mm
- AP 100.1200 1200 mm
- AP 100.1400 1400 mm
- AP 100.1600 1600 mm
- AP 100.1800 1800 mm

AP 80

pull handle, 40 x 10 mm
(right-angle holders),
stainless steel, matte, polished
or black finished

- AP 80.625 625 mm
- AP 80.825 825 mm
- AP 80.1025 1025 mm
- AP 80.1225 1225 mm
- AP 80.1425 1425 mm
- AP 80.1625 1625 mm
- AP 80.1825 1825 mm

Available colours:



stainless steel



black

AP 50

pull handle, dia. 30 mm
(holders bent to the side),
stainless steel, matte,
polished

- AP 50.600 30x600 mm
- AP 50.1000 30x1000 mm
- AP 50.1200 30x1200 mm

AP 30

pull handle, dia. 30 mm
(holders turned 45 deg.),
stainless steel,
matte, polished

- AP 30.600 30x600 mm
- AP 30.800 30x800 mm
- AP 30.1000 30x1000 mm
- AP 30.1200 30x1200 mm
- AP 30.1400 30x1400 mm
- AP 30.1600 30x1600 mm
- AP 30.1800 30x1800 mm

AP 70

pull handle, 40 x 10 mm
(holders turned 45 deg.),
stainless steel,
matte, polished

- AP 70.600 40x10x600 mm
- AP 70.800 40x10x800 mm
- AP 70.1000 40x10x1000 mm
- AP 70.1200 40x10x1200 mm
- AP 70.1400 40x10x1400 mm
- AP 70.1600 40x10x1600 mm
- AP 70.1800 40x10x1800 mm

AP 110

pull handle, 30 x 30 mm
(holders turned 45 deg.),
stainless steel,
matte, polished

- AP 110.600 600 mm
- AP 110.800 800 mm
- AP 110.1000 1000 mm
- AP 110.1200 1200 mm
- AP 110.1400 1400 mm
- AP 110.1600 1600 mm
- AP 110.1800 1800 mm

AP 90

pull handle, 40 x 10 mm
(holders bent forward),
stainless steel,
matte, polished

- AP 90.600 600 mm

AP 46

pull handle, 40 x 25 mm,
semi-circular (right-angle
holders), stainless steel, matte,
polished or black finished

- AP 46.625 625 mm
- AP 46.825 825 mm
- AP 46.1025 1025 mm
- AP 46.1225 1225 mm
- AP 46.1425 1425 mm
- AP 46.1625 1625 mm
- AP 46.1825 1825 mm

Available colours:



stainless steel



black

Lever handles



AP 200

pull handle, dia. 35 - 40 mm
(right-angle holders),
Jatobe/stainless steel,
matte, polished

- AP 200.800 800 mm
- AP 200.1200 1200 mm
- AP 200.1600 1600 mm



AP 130

pull handle, 30 x 20 mm
(right-angle holders),
stainless steel,
matte, polished

- AP 130.630 630 mm
- AP 130.830 830 mm
- AP 130.1030 1030 mm
- AP 130.1230 1230 mm
- AP 130.1430 1430 mm
- AP 130.1630 1630 mm



AP 210

pull handle, dia. 35 - 40 mm
(holders turned 45 deg.),
Jatobe/stainless steel,
matte, polished

- AP 210.800 800 mm
- AP 210.1200 1200 mm
- AP 210.1600 1600 mm



AP 270

horizontal pull handle

- AP 270 60x550mm



AP 250

horizontal pull handle

- AP 250 480x65mm



lever handle: 1924216X
stainless steel, natural
anode and inox, white,
anthracite, black



lever handle: 1924218X
escutcheon: 1924230X
stainless steel, natural anode and
inox, white, anthracite, black



lever handle: 1924111X
escutcheon: 1924113X
RAL colours



lever handle: 8001289X
escutcheon: 1924113X
RAL colours, natural
anode, faux anode

Aluprof offers a wide range of kickplates and door protection plates as anti-scratch protection of the door surface.

AP 3300

Flush anti-scratch protection,
Alunox



AP 3400

Flush anti-scratch protection,
Alunox



AP 3500

Flush anti-scratch protection,
Alunox



AP 3000

Flush kickplate - Alunox



| 130 mm high

AP 3020

Flush kickplate - Alunox



| 60 mm high

AP 3021

Flush kickplate - Alunox



| 30 mm high

Wood-like coatings and RAL colours



Golden Oak ADEC D101 Rustic Oak ADEC D210 Swamp Oak ADEC D502 Ebony ADEC M102 Walnut ADEC O102 Walnut Vein ADEC O205 Mahogany ADEC M103 Mahogany Sapeli ADEC M204 Pine ADEC S106 Pine ADEC S110



Fir ADEC J107 Fir ADEC S208 Beech ADEC B108 Cherry ADEC W109 Wenge ADEC W205 Winchester ADEC D207 Gean ADEC C110 Gean ADEC C212 Dark Cherry ADEC C106 Chestnut ADEC K101

// RAL & structural colours*



Palisander ADEC M332 Dark walnut ADEC O306 Vintage Oak ADEC D825 Concrete ADEC E137

* All RAL colours and structural colours as per the offer. The colours may vary slightly from the finished product.

Master-Point
clear glass



Chinchilla
clear glass



Satinato
frosted glass



Master-Ligne
clear glass



Master-Carre
clear glass



Transparent
glass



Aluprof offers a wide range of glass with motif, glass made of transparent or ornamental glass in its most popular models

All door models come in variants with sidelight and toplight.

- Version 1:** glass with motif
- Version 2:** transparent glass
- Version 3:** ornamental glass

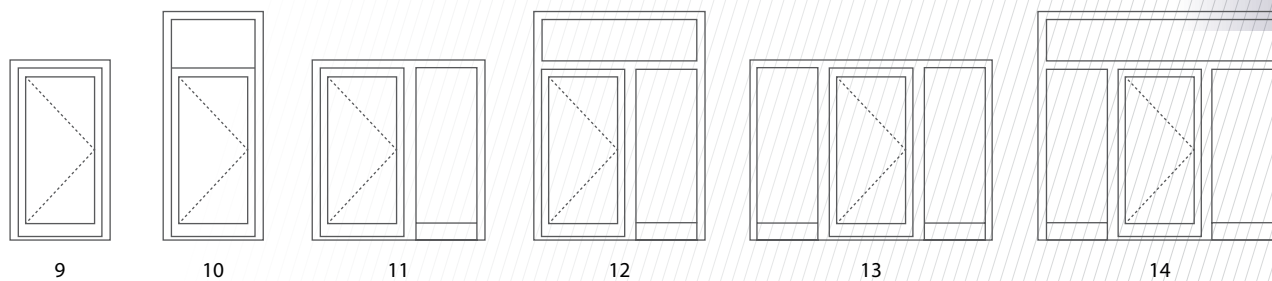
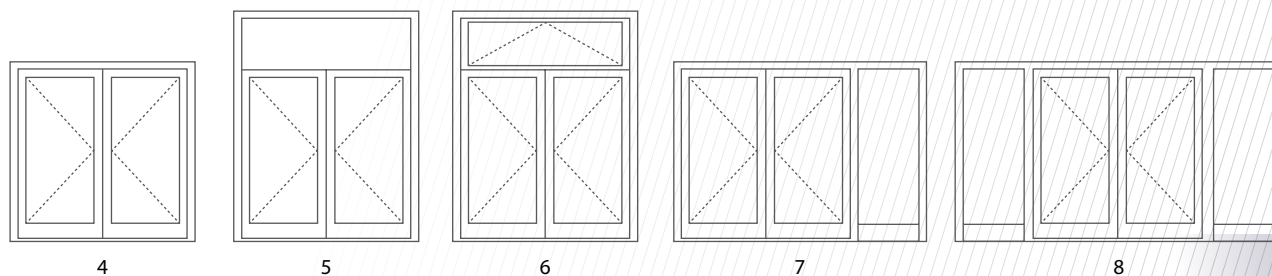
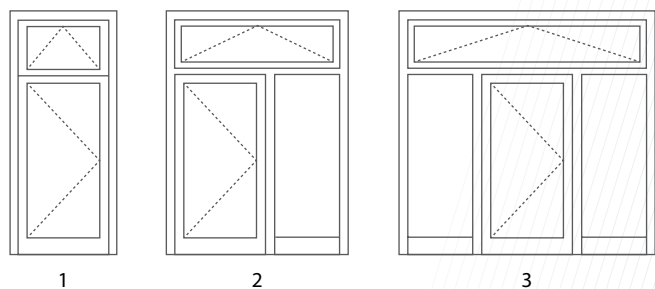
Sidelights and fixed lights include triple glazing units with warm glass spacers. Sidelights (fixed glazing) can be placed either on one or on both sides of the door assembly. Maximum sidelight width: 1400mm.

Triple glazing: U_g - from 0.5 to 0.7 W/m²K
For depth of frame from 44-85 mm
(black, warm edge spacer bar)

outer: 6 mm laminated safety glass (VSG)
middle: sandblasted glass / leaded stained glass / insulating glass with low-E coating
inner: insulating glass with low-E coating

Quadruple glazing: U_g - 0.5 W/m²K
For 95 mm frame depth
(black, warm edge spacer bar)

outer: 6 mm laminated safety glass (VSG)
middle I: sandblasted glass / leaded stained glass / insulating glass with low-E coating
middle II: insulating glass with low-E coating
inner: insulating glass with low-E coating



WWW.HOME.ALUPROF.EU

Please visit our site www.home.aluprof.eu to learn more on energy-efficient aluminium systems for the construction industry.





vrata puerta portière **drzwi** door vrata **puerta** portière TÜR **drzwi** door



Scan the QR code
and download the PDF
onto your mobile device

ALUPROF

ALUMINIUM SYSTEMS

ALUPROF SA

ul. Warszawska 153, 43-300 Bielsko-Biała, Poland
tel. +48 33 81 95 300, fax +48 33 82 20 512
e-mail: aluprof@aluprof.eu, www.aluprof.eu